



Newman Street, W1T 1QF

£3,250 PCM



634 Sq. Ft. | Council tax band: F | EPC rating: C

- First Floor Two Bedroom Apartment
- Wonderful Period Features
- Wood Flooring and High Ceilings
- Luxury Bathroom and Modern Kitchen
- Superb Fitzrovia Location
- Beautifully Furnished and Very Well Maintained



MAPLEWOOD
PROPERTY & INVESTMENTS LTD.

0203 488 0224
hello@maplewoodproperty.co.uk
www.maplewoodproperty.co.uk

Description

This two bedroom apartment has been carefully modernised throughout, maintaining some lovely period features. The entrance hall leads to a modern kitchen with integrated appliances before opening onto a living/reception room with a bay window and space for dining.

Both bedrooms can accommodate a king-sized bed and include excellent storage. The master bedroom is particularly bright and features a walk-in closet. A separate bathroom offers luxury fixtures and fittings and beautiful tiling giving a modern feel and finish to the property.

This highly desirable location, just off Mortimer Street in the heart of Fitzrovia benefits from close proximity to the restaurants, particularly on Charlotte Street. Oxford Street & Regent Street shopping destinations and the buzz of London's West End with unparalleled options for coffee shops. The property is also close to the British Museum, Russell Square and Regents Park, within easy reach of the central London university campuses.

Online Virtual Tour highly recommended: bit.ly/PrimeViews-NewmanStreet

Available Immediately.

Council Tax: Westminster Band F (£1,248.19 per annum)

Deposit: Equivalent to 5 weeks rent

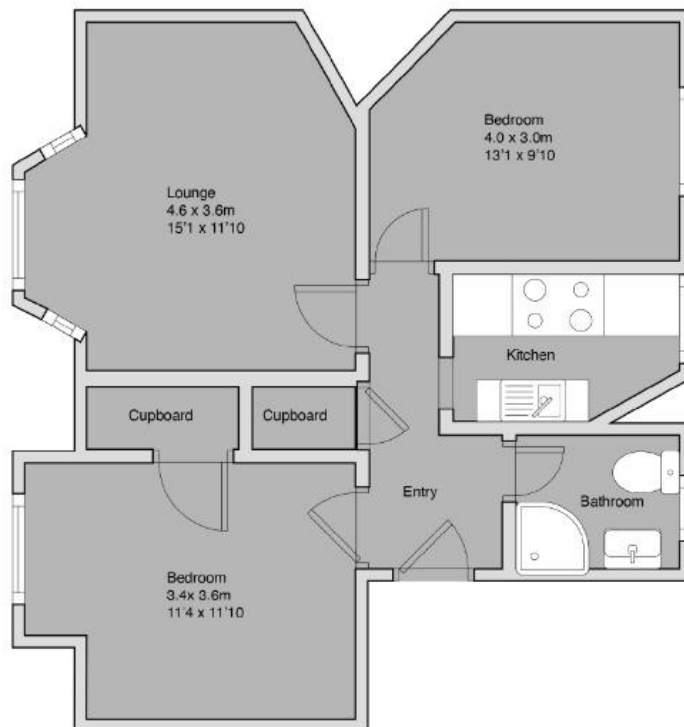
Tenancy Length: Long term

Floorplan

Newman Street

Fitzrovia, London W1

Approximate gross area: 58.87 sq m / 634 sq ft



This floor plan is not to scale and measurements and area shown are approximate, and therefore should be used for illustrative purposes only. Whilst we have confidence in the information produced, it must not be relied on. If there is any aspect of particular importance, you should carry out or commission your own inspection of the property. Copyright of Prime Views. www.primeviews.co.uk

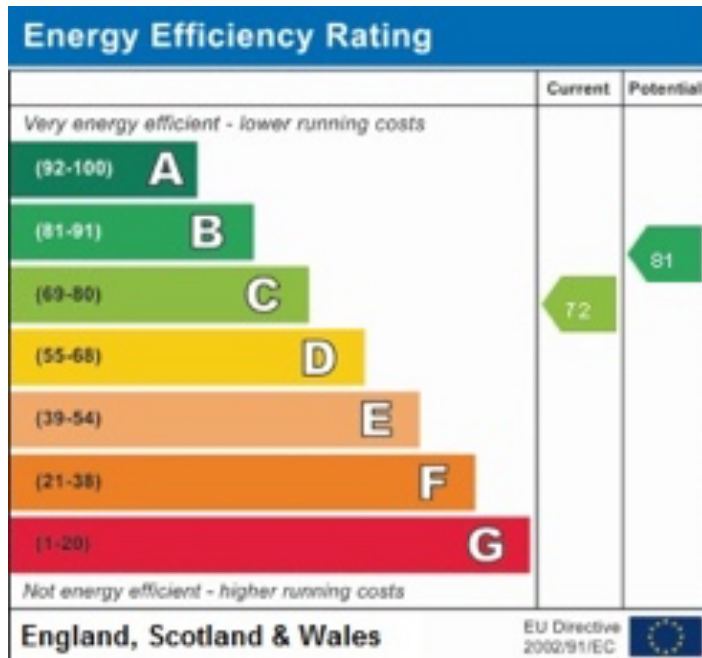
Photographs



Map



Energy Performance Rating



MAPLEWOOD
PROPERTY & INVESTMENTS LTD.